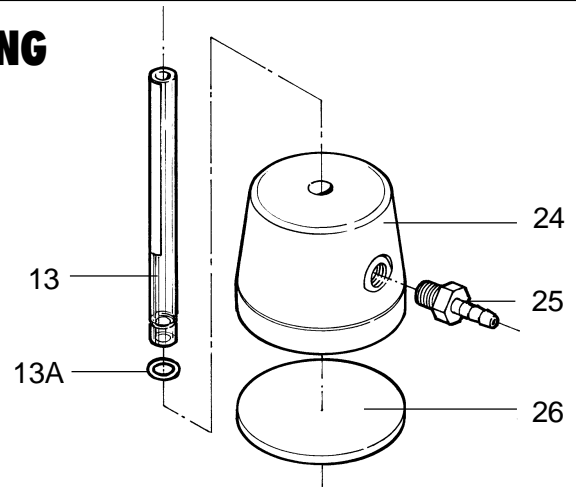
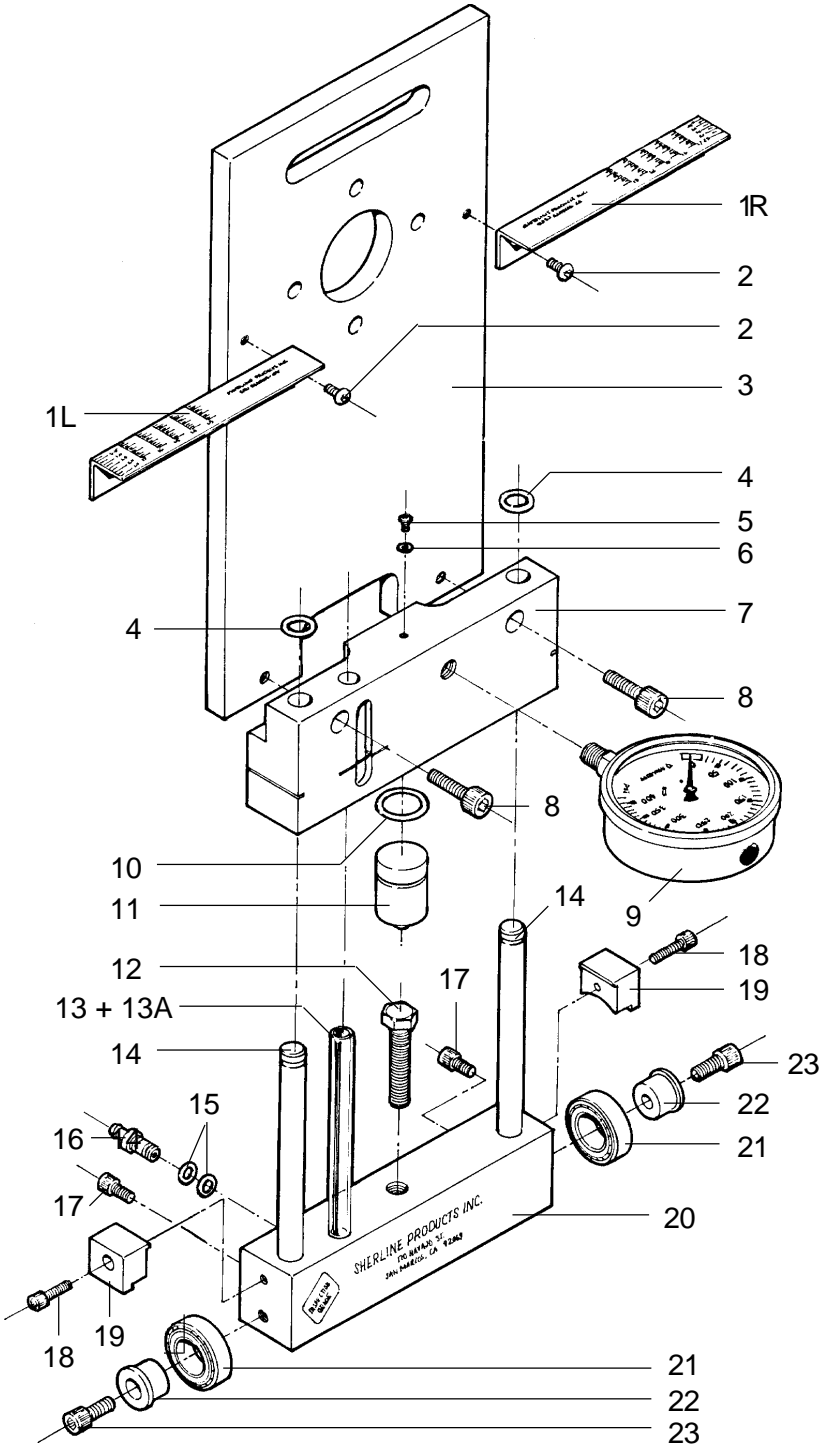


SHERLINE

"INSPECTION GRADE" ALIGNMENT SYSTEM

EXPLODED VIEW AND PARTS LISTING



PART NUMBERS

REF.	P/N	REQ.	DESCRIPTION
1L	20017	1	Toe scale extension (Left)
1R	20018	1	Toe scale extension (Right)
2	20014	2	1/4-20 x 3/8" Button Hd Screw
3	20020	4*	Alum. Wheel Plate (raw material only)
	20021	4*	Alum. Wheel Plate (custom machined)
4	20030	2	3/4" OD x 1/8" O-Ring Stop
5	20031	1	8-32 x 1/4" Button Hd Screw
6	20037	1	1/4" OD x 1/16" O-Ring
7	20002	1	Upper Body
8	20036	2	3/8-16 x 1-1/8" Skt Hd Screw
9	20003	4**	Pressure Gauge (0-400 lb.)
	20004	4**	Pressure Gauge (0-600 lb.)
	20005	4**	Pressure Gauge (0-800 lb.)
10	20038	1	1-1/8" OD x 1/8" O-Ring (Piston)
11	20013	1	Piston
12	20040	1	1/2-13 x 2" Ht. Adjust. Screw
13	20051	2	Sight Glass w/ red tape
13A	20039	2	1/2" OD x 1/16" O-Ring
14	20011	2	Slide Rod
15	20032	8	3/8" OD x 1/16" O-Ring
16	20050	4	Brass Water Line Fitting
17	20033	2	1/4-20 x 1/2" Skt Hd Screw
18	20034	2	1/4-20 x 3/4" Skt Hd Screw
19	20010	2	Roller Brake Block
20	20001	1	Lower Body
21	4042	2	Ball Bearing Roller
22	20012	2	Roller Bushing
23	20035	2	3/8-16 x 3/4" Skt Hd Screw
24	20015	1	Auxiliary Level Gauge Body
25	20016	1	Plastic Water Line Fitting
26	8002	1	Rubber Base Pad

* See separate sheet for construction details.

**System includes 4 gauges. You may choose all four the same or you may select two pairs of two different ranges.

SHERLINE PRODUCTS, INC. • 3235 Executive Ridge • Vista • CA 92083 • Phone (800) 541-0735 or (760) 727-5857

Fax: (760) 727-7857 • Internet: www.sherline.com • E-mail: raig@sherline.com