

### CAUTION!

Avoid sudden shock loading on the scale and sling. Raise and lower all weights smoothly. Rapid acceleration or deceleration of an object adds the object's inertia to its mass, greatly increasing its momentary weight. This can damage the gage.

**SHERLINE**  
**PRODUCTS**  
INCORPORATED 1974

## SHERLINE Suspended Hydraulic Scale

### INSTRUCTIONS FOR USE

Please read all instructions carefully and follow the safety precautions provided. Lifting, weighing and moving heavy objects demands constant attention and the application of good common sense. This scale is intended to be used as an affordable way to determine the weight of heavy items. Gage accuracy is rated at 2-3% of the range of the gage. This means a 2000 lb gage is accurate to within 2% to 3% of 2000 pounds or 40-60 pounds, and a 5000 lb gage is accurate to within 100-150 pounds. For this reason, it would be unreasonable to expect a 5000 lb gage to provide an accurate reading when attempting to weigh a 200-pound item. The percentage of error becomes less significant as the weight increases. Select a gage that is properly suited for the item you are weighing.

#### RECOMMENDED GAUGE RANGES

**CAUTION!** Do not use a gage that measures a range over 5000 pounds or ever attempt to suspend weights over that amount from this scale.

For maximum accuracy, use a gage that will put your expected final measurement in about the middle of the gage's range. For example, for weights of about 1000 lb. use a gage that reads to 2000 lb. The gage included with your scale is accurate to within 2% at mid-range and 3% at extreme low or high readings. To provide a gage slightly more accurate would increase the cost of the scale significantly. The supplied gage was chosen as the most cost effective solution to providing a result that is sufficiently accurate for loading purposes.

Gages of different ranges and levels of accuracy are available from Sherline Products. Contact us for more information should you have a specific requirement that is not fulfilled by the gage you now own.

#### CHANGING GAUGES

To change gages, simply unscrew the installed gage and replace it with another gage which also reads in

PSI. It should have a 1/4" pipe thread fitting. Tip the body of the scale so the hole is up so that no hydraulic fluid is lost when the gage is removed. When replacing the gage, position the cylinder so that the beginning of the round part (just below the area relieved for the hook and pin) is just above the top of the body. Push or pull it to that position if necessary.

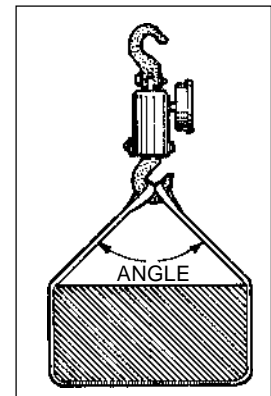
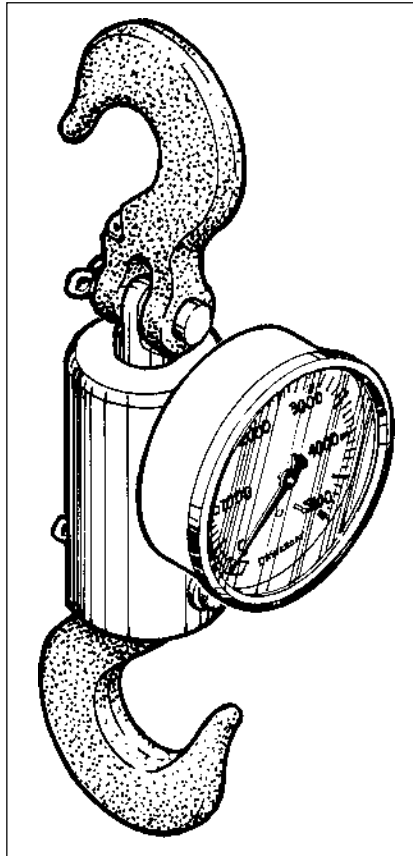
When you install the new gage, lay the body of the scale on a flat surface with the gage hole in the 12 o'clock position (straight up). The fluid level in the threaded gage hole should be right to the top of the hole. If it is not, add a little low viscosity oil, such as 20-weight motor oil. Keeping the hole level, lightly tap the scale body and make sure no air bubbles appear in the hole. Use teflon tape on the gage threads to prevent leakage and reinstall the gage. Do not overtighten!

#### LIFTING A WEIGHT WITH THE SHERLINE SUSPENDED SCALE

The Sherline scale was intended to lift a weight only high enough so that it is totally suspended while a reading is taken. It should be removed before swinging the lifted item into its final position. Do not leave a load suspended from the scale longer than necessary to take a reading.

#### Always follow these safety rules:

- Before lifting, determine that the weight of the load is within the rated capacity of the scale and lifting chain or sling.
- Inspect chains and slings for damage before using.
- Keep all portions of your body from between the sling and the load and from between the load and the ground.



SHERLINE PRODUCTS INC. □ 3235 Executive Ridge □ Vista □ California 92083 □ FAX: (760) 727-7857  
Phone: Toll Free Order Line: (800) 541-0735 □ Tech. Assistance, International and Local: (760) 727-5857

Visit our Worldwide Web site at: [www.sherline.com](http://www.sherline.com)

- If a basket type sling is used to lift the item (a sling that goes from the hook, around the item and back to the hook), remember that the greater the angle between the ends of the sling, the more the sling's lifting capacity is decreased. In the example shown, the angle is about 90°. The sling's capacity is only about 70% of what it would be if were suspended straight up and down. a 60° angle yields a factor of about 86% strength. At a 120° angle the sling can lift only half its rated capacity.
- The lower hook should be well above the center of gravity of the load.
- **CAUTION: Avoid shock loading** on the scale and sling. Sudden increases in pressure can damage the gage. Raise and lower weight smoothly and slowly.
- The Sherline scale is not intended to be used for trade; i.e., items priced by weight.

### WARRANTY

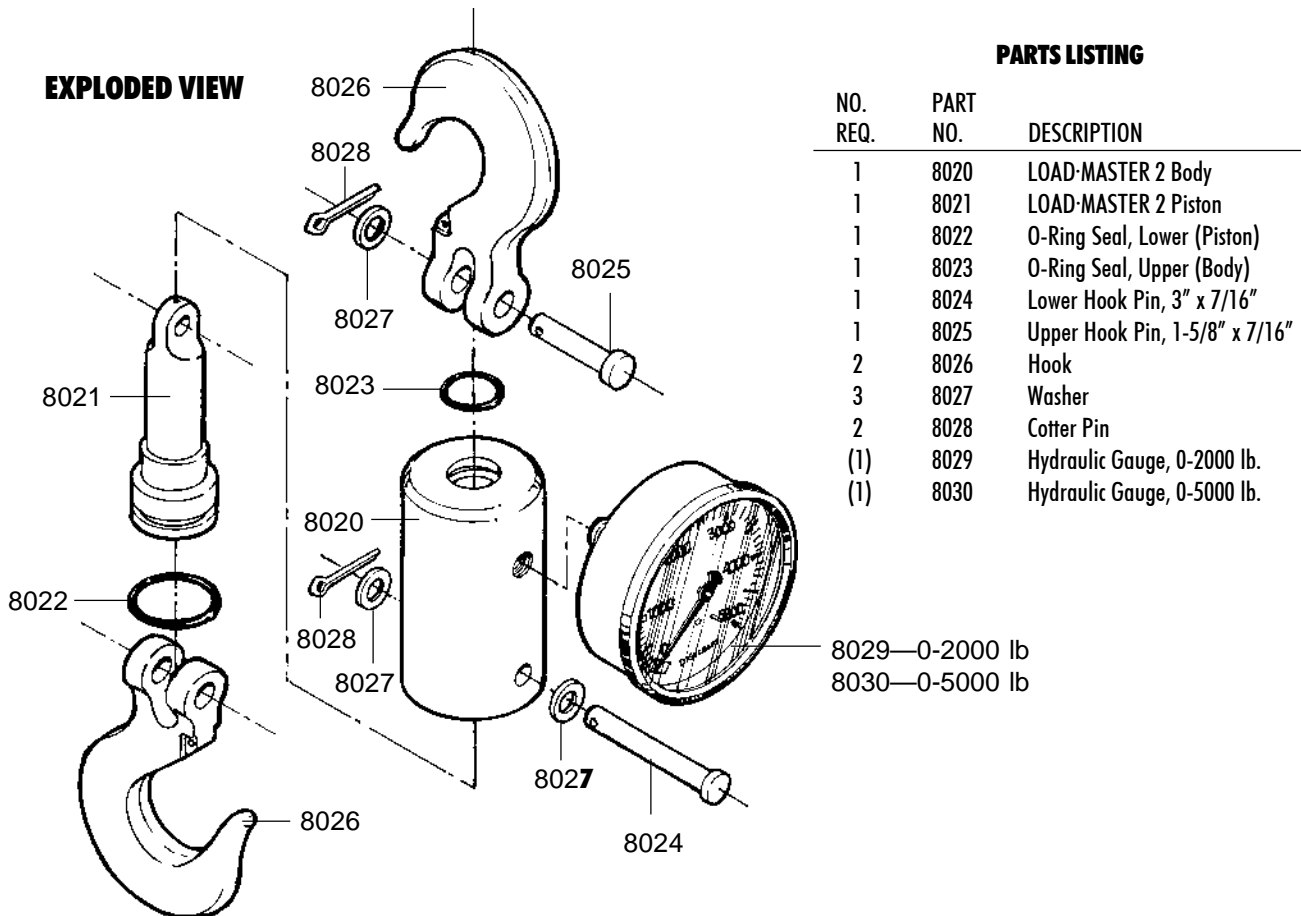
The Sherline suspended scale is warranted by Sherline Products, Inc. for one year from time of purchase to be free of defects in manufacturing and assembly. This includes all parts, seals and the gage installed at purchase. Should any problems occur with the proper functioning of the scale, return it to the address below along with dated proof of purchase for repair or replacement at our option. This warranty does not cover damage due to misuse, neglect, overloading or improper installation of a gage other than the one installed by the factory.

Gage accuracy is warranted by the gauge manufacturer to be within 2% of the total gage scale at mid-range of the gage and 3% at extremes of the gage's range. These gages are not recommended for trade purposes.

SHERLINE Products, Inc.  
3235 Executive Ridge • Vista • CA 92083  
Phone: 760-727-5857 • Fax: 760-727-7857

For additional information on loading and trailering, ask for Sherline's free instruction book on the Sherline Trailer Tongue Weight Scale. It contains a wealth of advice on loading and driving for safe highway trailering. The original Sherline scale, also available from Sherline

Products, is a hydraulic scale designed specifically to measure trailer tongue weight. Call for information.



### PARTS LISTING

NO. REQ.	PART NO.	DESCRIPTION
1	8020	LOAD-MASTER 2 Body
1	8021	LOAD-MASTER 2 Piston
1	8022	O-Ring Seal, Lower (Piston)
1	8023	O-Ring Seal, Upper (Body)
1	8024	Lower Hook Pin, 3" x 7/16"
1	8025	Upper Hook Pin, 1-5/8" x 7/16"
2	8026	Hook
3	8027	Washer
2	8028	Cotter Pin
(1)	8029	Hydraulic Gauge, 0-2000 lb.
(1)	8030	Hydraulic Gauge, 0-5000 lb.

8029—0-2000 lb  
8030—0-5000 lb