

**SHERLINE  
PRODUCTS**  
INCORPORATED 1974

## Bullnose Live Center

P/N 1182

### Use of the Bullnose Live Center

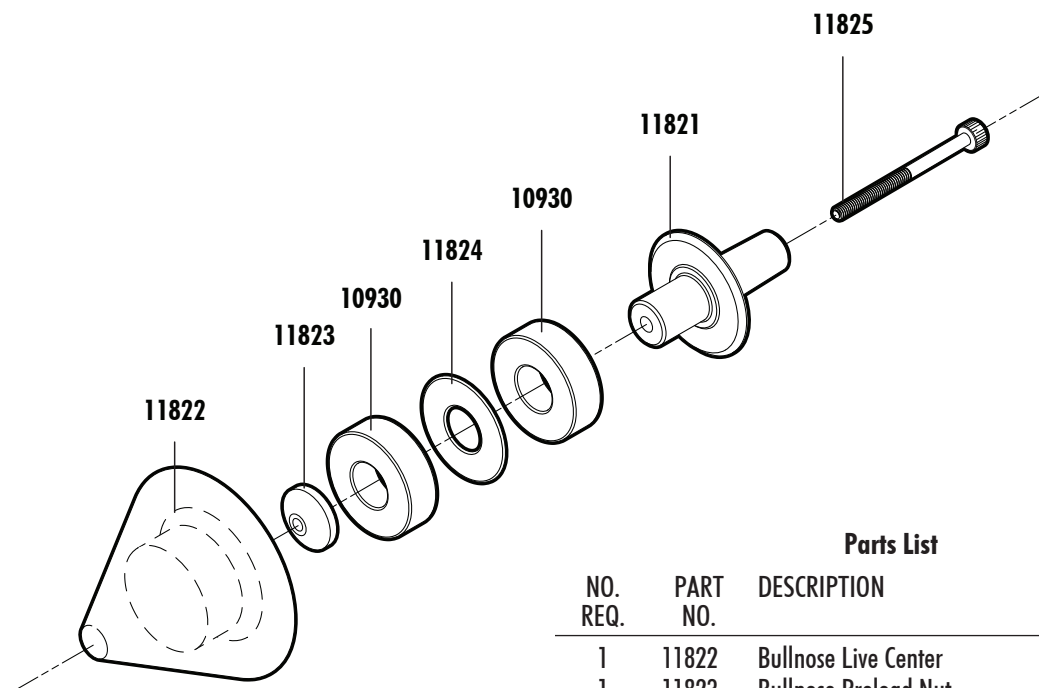
A live center is the best way to support the end of a long piece held between centers in a lathe, but sometimes the piece may have a hole in the end that is too large in which to index a standard live center. The bullnose live center will support parts or tubing with an open end as large as 1-5/8" in diameter. Its solid steel bullnose center turns on two preloaded ball bearings. It is fitted with a #0 Morse taper to fit the tailstock spindle. Rather than turn a sleeve

to size down a hole, this special live center can be fitted up in seconds when needed.

For more information on the use of live centers, see P/N 1191.

Thank you,  
Sherline Products Inc.

### EXPLODED VIEW AND PART NUMBERS



#### Parts List

NO. REQ.	PART NO.	DESCRIPTION
1	11822	Bullnose Live Center
1	11823	Bullnose Preload Nut
2	10930	3/8" Bearing
1	11824	Bullnose Shim Washer
1	11821	Bullnose Center Body
1	11825	5-40 X 1 1/2" Socket Head Cap Screw

*NOTE: The bearings are pressed in at the factory. Preload on the bearings is adjusted before the nose piece is installed. Once assembled, the 1182 Bullnose Live Center is not considered user-serviceable. Parts are shown for reference only.*