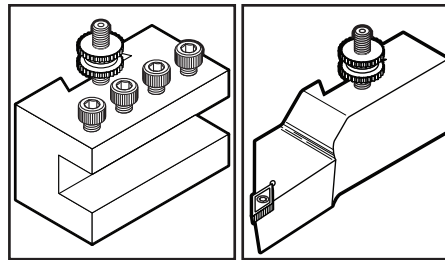
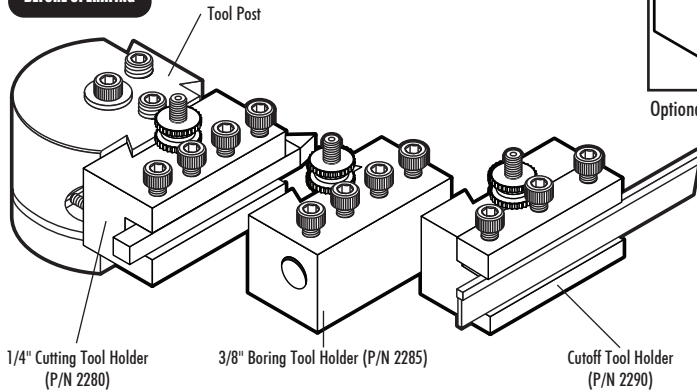




**SHERLINE  
PRODUCTS**  
INCORPORATED 1974



Optional P/N 2282 3/8" holder and P/N 2295 carbide insert holder.



## Quick-Change Tool Post and Tool Holders

P/N 2250 (And optional P/N 2282 and P/N 2295)

### Purpose of the Quick-Change Tool Post

In a modern production machine shop, time is money, so being able to change tools quickly on a lathe becomes an economic necessity. Years ago a dovetailed holder and cam locking arrangement was developed to make it possible to quickly change tools while leaving the body of the tool holder mounted to the table. For most users of tabletop size machine tools, however, the economic factor is not the prime reason for going to a quick-change tool system. Being able to change tools quickly simply means more time is spent doing the productive part of the job, and less time is wasted changing tools. The Sherline Quick-Change Set (P/N 2250) includes the tool post and three holders: the 1/4" Tool-Bit Holder (P/N 2280), the 3/8" Boring-Tool Holder (P/N 2285) and the Cutoff-Tool Holder (P/N 2285). An optional holder for Inserted-Tip Carbide Tools is available as P/N 2295.

### Construction of the Quick-Change Tool Post and Holders

The tool post body and holders are machined from steel, case hardened and coated with a black oxide finish. This provides a very durable product that should provide generations of service if cared for. Two dovetails are provided on the tool post so holders can be mounted in a choice of positions. The individual holders are locked in place with a cam against a dovetailed slide that is tightened using the same hex key used for many other Sherline operations.

### Mounting the Tool Post and Changing Holders

The tool post is mounted to the lathe table using the same T-nut arrangement as the standard Sherline tool post. A secondary clamp is also provided and may be used to ensure the tool post doesn't move. The horizontal flange of the angle clamp goes in the groove around the base of the tool post. The tool holder is then slipped over the appropriate dovetail on the tool post. The height of the tool tip is adjusted using the knurled handwheel. The cutting tip of the tool should be set to the centerline of the lathe by bringing the tool tip up to a Morse dead center in either the headstock or tailstock spindle. Once the height is set,

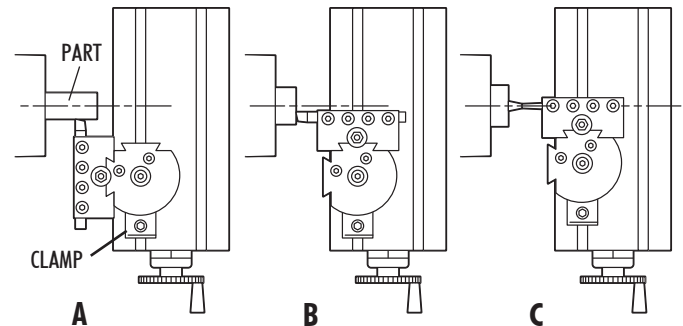


FIGURE 1—The 1/4" cutting tool can be mounted in either position. Figure A shows the position for cutting and Figure B shows the position for facing. Figure C shows the boring tool positioned to bore the end of a piece of stock.

lock the knurled wheel in position with the hex nut. The holder can now be removed and replaced and the tool will remain at the proper height.

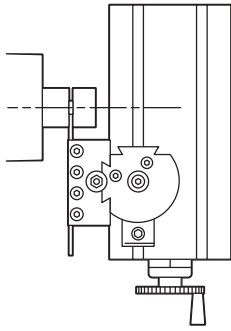
### The Boring Tool Holder

The boring tool holder will accept any boring tool with a 3/8" shank. This includes the 3/8" boring tools (P/N 3061 and 3063) used with the P/N 3054 Sherline boring head. A variety of boring tool sets are available that would also fit the holder. These can be obtained from independent tool supply companies. It is a good idea to grind a small flat for the clamping screw to locate on. It isn't necessary to clamp all four screws to hold the tool. One or two will be sufficient. The additional screws are there to clamp a tool when the holder is used on the other dovetail.

### Using a Parting Tool

After completing a part in the lathe, it is frequently necessary to separate the part from the excess material used for chucking. This operation is best accomplished with the use of a cut-off tool or "parting tool" as it is sometimes called. The Sherline cut-off tool holder utilizes a very slender high-speed tool steel cutting blade. The thinness of the Sherline blade (.040") enables it to feed into the part quite easily and at the same time minimizes the amount of waste material.

FIGURE 2—The cutoff tool or “parting” tool is held as shown. The height of the cutting tip of the blade should be adjusted using the height adjustment wheel until it is exactly on center with the spindle.



If you use a non-Sherline blade, it is recommended that the blade be no wider than 1/16" when used in this holder. The turning speed for parting should be approximately one-half the normal turning speed for any given material. One word of caution; never use a parting tool on a part mounted between centers. The part may bind on the cutter and result in a scrapped part or a broken cutting tool.

Always try to lay work out so the cut-off tool is used as close to the spindle as possible. Set blade height using the adjustment wheel on the tool holder. It should be set so the tip is aligned with the centerline of the part being cut.

**NOTE: ALWAYS USE CUTTING OIL WHEN USING THE CUT-OFF TOOL.** The cut will be made much smoother, easier and cooler.

Speed should be slower than normal turning speed and feed rate should be a little heavy so the chip will not break up in the slot. If speed and feed are correct, there will not be any chatter, and the chip will come out as if it were being unrolled from a spool. Coolant (cutting oil) plays a major roll in this occurring properly.

If the tool chatters, first check to see if the work is being held properly. Then decrease speed (RPM) or increase feed rate or both. Once the blade has chattered, it leaves a serrated finish which causes more chatter. Sometimes a serrated finish can be eliminated by turning the spindle off, adding a liberal amount of cutting oil, bringing the blade up so there is a slight pressure on it without the spindle turning, and then turning by hand or as slowly as possible with the speed control to remove the chatter marks.

### Sharpening Instructions

To sharpen the blade, set the tool support on the grinder in such a way that it will produce a 7° to 10° angle on the blade (top to bottom). (See Figure 3.)

FIGURE 3—Side view of blade.

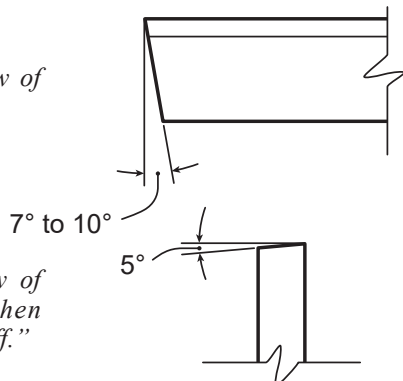


FIGURE 4—Top view of blade (enlarged) when ground for “parting off.”

If you are sharpening the blade to “part off,” the blade should have an additional angle of approximately 5° when viewed from the top with the point on the right. (See Figure 4.) Normally the angle would be as high as 15° but the .040" thickness of the blade would not be rigid enough and the blade could bend. If you want to cut grooves, don’t put any angle on the blade when seen from the top.

If the cutting edges on the sides get dull, grind off the end of the blade until you get into new material where the edges are sharp to the cutting end. New blades are available as P/N 3086 from Sherline Products.

### Care of Your Tool Post and Holders

The case hardened and black oxide-finished steel components are very tough, but the corners and dovetail edges can be chipped if dropped or banged together. They should be protected from each other in your tool drawer. Because they are steel, they should also be protected with a light coating of rust preventative before putting them away.

### Cutting Tools Available

Cutting tools are available from Sherline for the holders as follows:

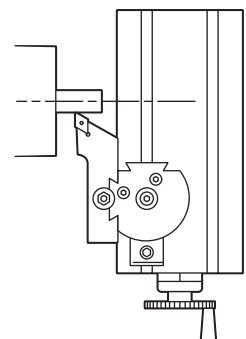
- 1/4" cutting tool blank (P/N 3005) or a package of five blank 1/4" tools (P/N 3005B)
- 1/4" brazed tip carbide cutting tool set of 3 tools: left, right and 60° threading (P/N 3006)
- 1/4" pre-sharpened HSS cutting tool set of 3 tools: left, right and boring tool (P/N 3007)
- Cutoff tool blade (P/N 30860)
- 3/8" diameter boring tool holder that takes 55° inserted carbide tips (P/N 7635) or 3/8" diameter boring tool holder that takes 80° carbide inserts (P/N 7638)

### Optional Accessories for the QC Tool Post

#### P/N 2295 Inserted Tip Carbide Cutting Tool Holder

For those who wish to take advantage of the superior cutting ability of carbide cutting tools, Sherline offers a tool holder for 55° inserted carbide tips. The P/N 2295 holder comes with one carbide insert, which has 2 cutting edges. It is held in place with a small screw. A special Torx wrench to tighten the screw is also included. Like the P/N 2250 tool post and three dovetailed holders, the inserted tip holder is manufactured from steel, case hardened, and given a black oxide finish.

FIGURE 5—The inserted tip holder can be used for cutting as shown or for facing as shown in figure 1B on the first page.



Replacement inserts for this holder are available from Sherline as well as from several other tool manufacturers. Sherline's replacement number for a single carbide tip is P/N 7605. They are also available in a box of ten as P/N 7605B.

#### P/N 2251 Riser Block

When using the quick-change tool post with the riser blocks in place on the lathe, a 1.25" riser block is now available.

#### P/N 2282 Holder for 3/8" Shank Tools

Due to many customer requests, in 2008 another optional holder was added. It is made from larger 1-3/16" stock to handle the additional stress of holding a 3/8" shank tool. This means you can now use inserted tip tool holders like the P/N 2256 and P/N 2257 plus other similar tools with your quick-change tool holder.

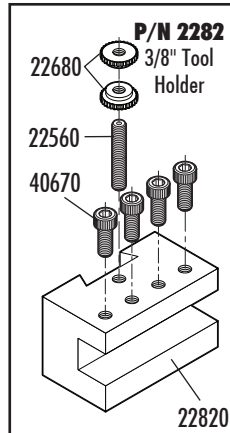
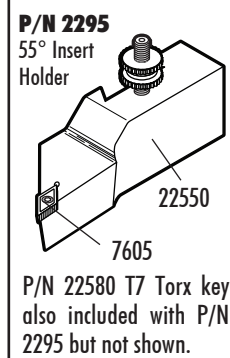
#### Using the Quick-Change Tool Post with the Compound Slide

You can now mount the Quick-Change Tool Post on top of the Compound Slide (P/N 1270) using a 10-32 x 2" SHC Screw\* (P/N 40730, sold separately). See the Compound Slide instructions for details on using compound slide and quick-change tool post together. <https://sherline.com/wp-content/uploads/2015/01/1270inst.pdf>

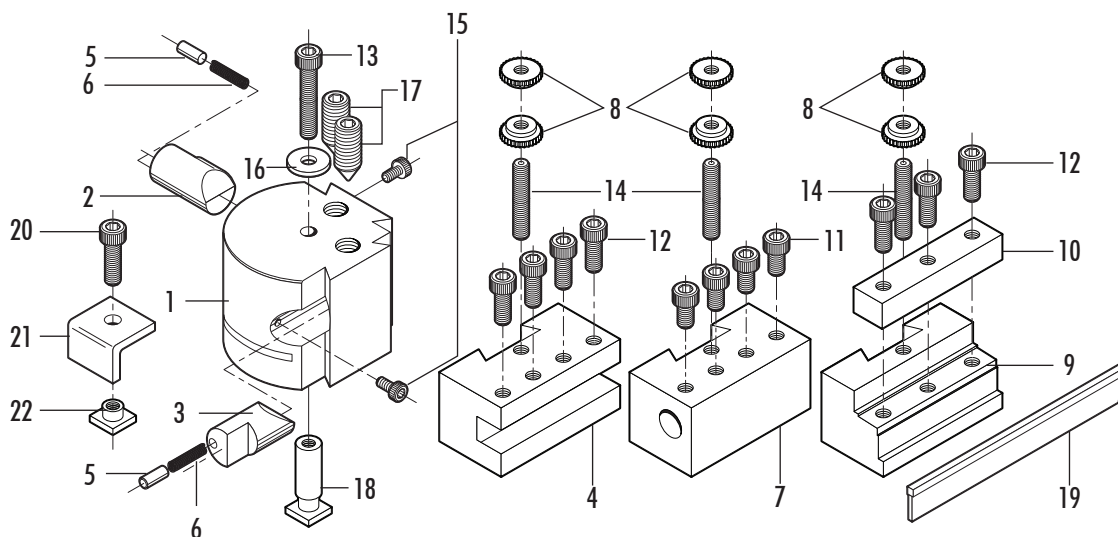
**\*NOTE:** You must use the Headstock Riser Block (P/N 1297) to use the Quick-Change Tool Post, or any other tool post, when mounting them to the top of the compound slide. Other tool posts may need to be modified in order to get your cutter on centerline.

Thank you,  
Sherline Products Inc.

#### Optional Tool Holders



#### Exploded View



Quick-Change Tool Post (P/N 22512)

1/4" Cutting Tool Holder (P/N 2280)

3/8" Boring Tool Holder (P/N 2285)

Cutoff Tool Holder (P/N 2290)

#### Quick-Change Tool Post Parts List

REF NO.	NO. REQ.	PART NO.	DESCRIPTION	REF NO.	NO. REQ.	PART NO.	DESCRIPTION
1	1	22510	Tool post body	12	7	40670	10-32 x 1/2" SHC Screw
2	1	22520	Left-hand cam	13	1	40340	10-32 x 1" SHC Screw
3	1	22530	Right-hand cam	14	3	22560	10-32 x 1" cone point set screw
4	1	22600	1/4" tool bit holder	15	2	22570	4-40 x 1/4" SHC Screw
5	2	22620	Cam spring pin	16	1	40660	3/16" I.D. washer
6	2	22630	.120" x 7/16" springs	17	2	40540	5/16" x 3/4" cone point set screw
7	1	22650	3/8" boring tool holder	18	1	40250	Extended tool post T-nut
8	6	22680	Knurled height adjustment nut	19	1	30860	Cutoff tool blade (sold separately)
9	1	22700	Cutoff tool holder body	20	1	40330	10-32 x 5/8" SHC Screw
10	1	22710	Cutoff tool holder clamp	21	1	35580	Hold-down clamp
11	4	40510	10-32 x 3/8" SHC Screw	22	1	30561	10-32 T-nut