

# Lathe Headstock Hard-Stop Kit

**P/N 40116**

### Purpose and Use of the Lathe Headstock Hard-Stop Kit

Starting in August, 2015 every Sherline headstock now includes the holes to add an optional hard stop. The hard-stop kit, P/N 40116, includes two hardened steel rods and a knurled thumbscrew lock. The .242" diameter steel rods are 4" and 8" long. A hole through the headstock base allows the hard-stop rod to be set to contact the lathe table, providing a hard stop for the Z-axis during turning operations. For fine adjustments of the stop, we recommend that you loosen the thumb screw and use the Z-axis handwheel to move the lathe saddle in or out by the amount desired. Then push the stop into the crossslide and retighten the thumb screw.

For those who have an older Sherline lathe and want to add the hard stop, your headstock case will need to be drilled to accept the rod and locking thumbscrew. Shown here (Figure 1) are the dimensions for drilling your own headstock.

If you don't want to, or don't have the facilities to drill the headstock, it can be returned to Sherline and we will drill the holes for you for an additional charge. Call for an RMA # before sending your headstock.

Thank you,  
Sherline Products Inc.

### Lathe Headstock Hard-Stop Kit Parts List

NO. REQ.	PART NO.	DESCRIPTION
1	40760	10-32 x 5/8" thumbscrew
1	40102	4" hard-stop rod
1	40103	8" hard-stop rod

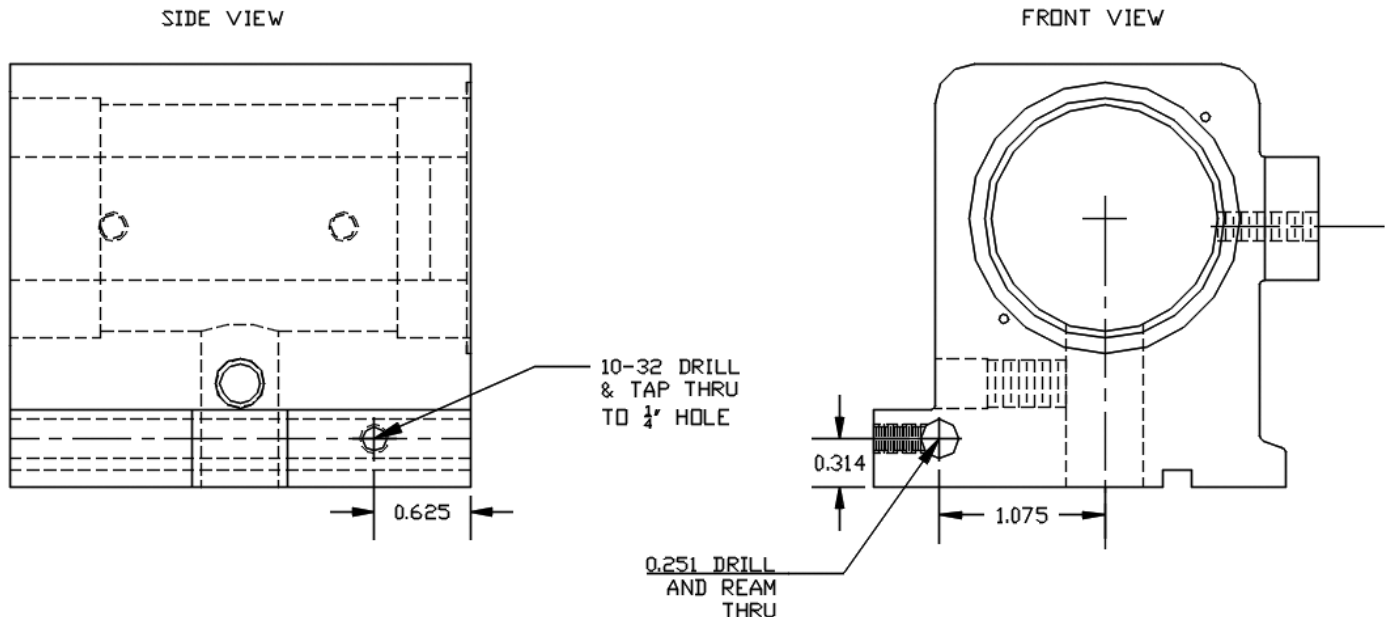


FIGURE 1—Shows where to drill holes for the rods, and the thumbscrew.