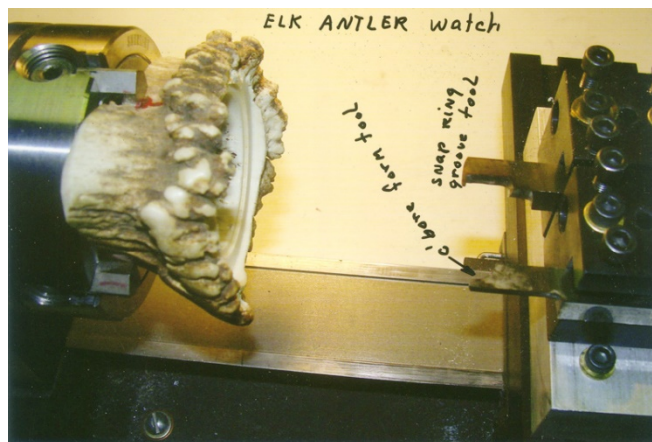
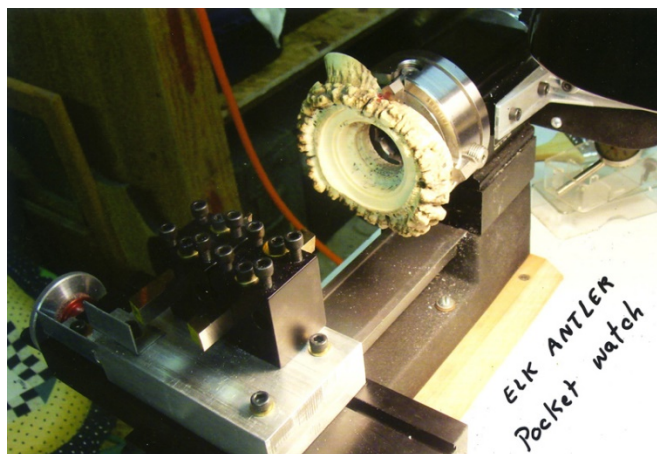


## General Project 33—Elk Antler Watch Cases and Wooden Pens/George Grower

Chuck Grower of Chuck's Custom Pens, watch necklaces and Pocket Watches in Coalville, UT cuts some rather unusual materials with his Sherline lathes and mill. He makes many of his cases and holders from antler as well as from exotic woods and Corian. His lathe is fitted with a riser block kit P/N 1291. Two P/N 7600 3/8" tool posts sit atop a special riser block on the crossslide table. The riser is only 1" high, because Chuck has fitted an extra long 8" crossslide table that is made from mill table extrusion, so it is an extra 1/4" thick. Chuck sells the elk antler watch necklaces for \$125.00 (as of 11/11) if you care to write him at 229 Icy Springs Road, Coalville, UT 84017.



*Chuck's shop is seen in the first photo. The second shows a setup to hold a piece of Elk antler to make a holder into which a pocket watch will be inset. The third photo shows the tooling he uses to bore out the hole for a pocket watch and then put in a thin groove for a snap ring to hold it in.*

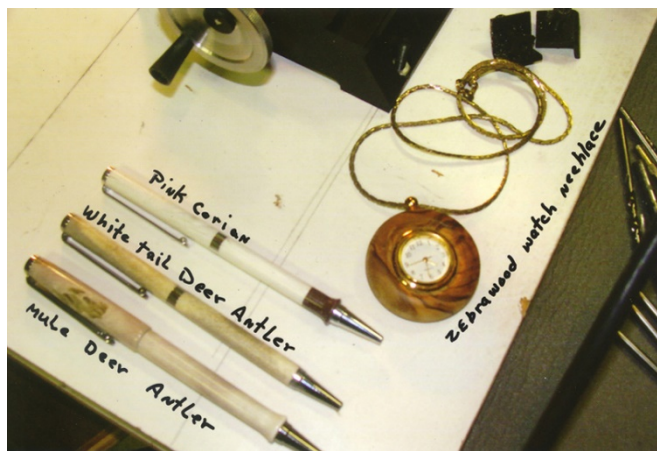
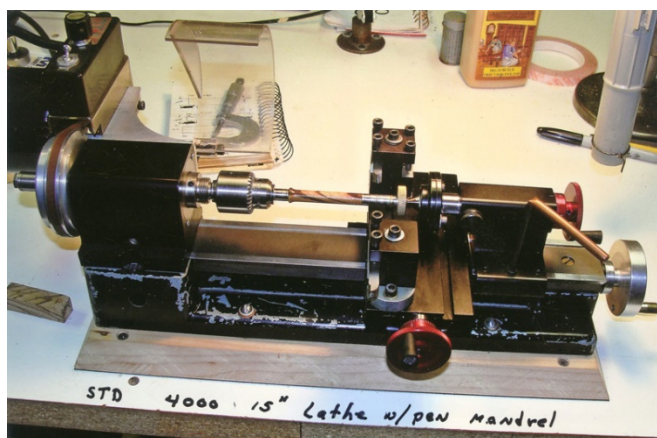
Mr. Grower is a retired machinist toolmaker from upstate New York who now lives in Utah. About 3 years ago he purchased a used 1973 model 4000 series Sherline lathe and started making pens. He now owns two new 4400-series lathes in addition to the 4000 as well as a Sherline deluxe milling machine.



*Elk Antler pocket watches are seen from the front.*



*The rear view shows that Chuck uses coins to fill the access hole used for chucking up the slice of antler stock.*



*Chuck's old 4000 lathe is fitted with a pen mandrel to turn pen bodies from exotic materials. On the right are a few of the pens he has made from antler and corian. Also shown is a zebrawood watch necklace.*