

## TIP 097 — Using Riser Blocks with the Sherline Radius Cutter/Dann

This tip came to us from Sherline user, Dann. He prefers to keep his headstock riser (P/N 12950) in place on his lathe, and wanted a solution to be able to use his radius cutter (P/N 2200) without having to remove the headstock riser.

He modified two single position 1/4" tool posts (P/N 40180) by milling off the tops of the tool posts so the overall height is 1.235" (see Figure 1). The T-nuts and the screws that come with the tool posts will work to secure the radius cutter assembly.

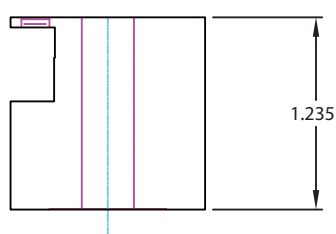


FIGURE 1—This diagram shows the finished height of the modified Single Position 1/4" Tool Post, P/N 40180.

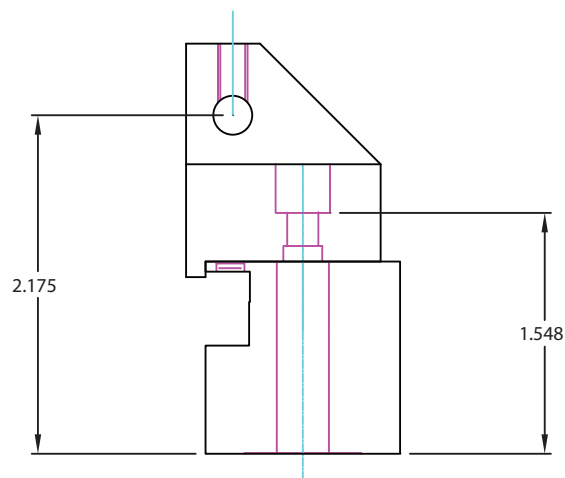


FIGURE 2—This diagram shows a Radius Cutter Support mounted to the modified tool post, P/N 40180.

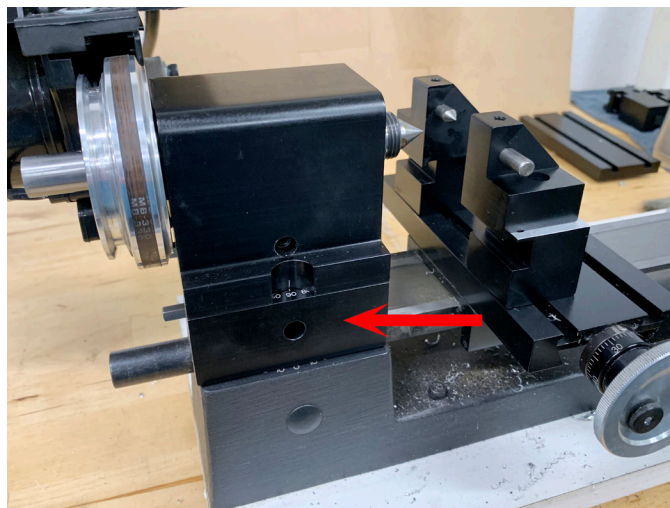


FIGURE 3—The red arrow shows the Headstock Riser Block mounted to the lathe base. P/N 12950 is just the riser block. P/N 1297 is the full assembly headstock riser with pivot pin, head key, and screws.

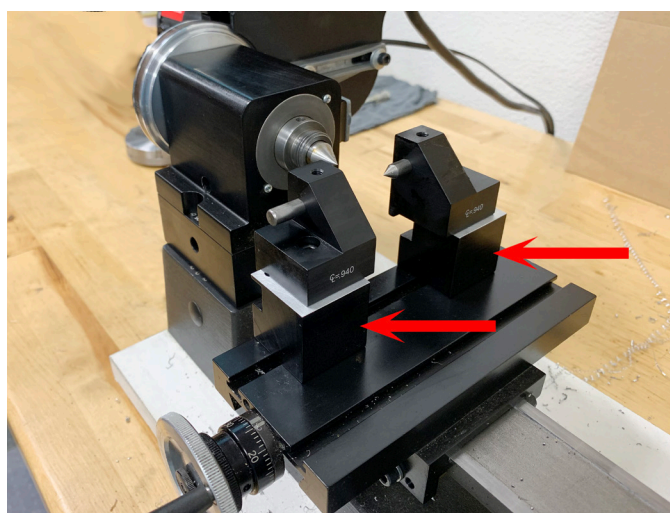


FIGURE 4—The red arrows show the modified tool posts, P/N 40180, with the Radius Cutter Supports mounted on top.