



The MASSO Link software works with Windows, macOS, and Linux



Sherline/MASSO WiFi Instructions

Step 1 – Connecting MASSO to Your WiFi Network

After installing MASSO software v3.34 or above, the MASSO status bar on the right side will display a WiFi button and clicking the button will display the WiFi Settings window as seen in Figure 1.

This window can be used to enter your WiFi network details; further, you can also assign a static IP address to the system. Please note that after entering the static IP information, and clicking the connect button, you might have to power cycle MASSO for the IP address to be assigned to the WiFi module

- Link to the MASSO site below and search for WiFi
- <https://www.masso.com.au/>

ESP8266 Software Versions

As the ESP8266 chips can have different software versions installed on them by the manufacturer, the ESP software version is displayed in the WiFi Settings window as shown below in Figure 3.

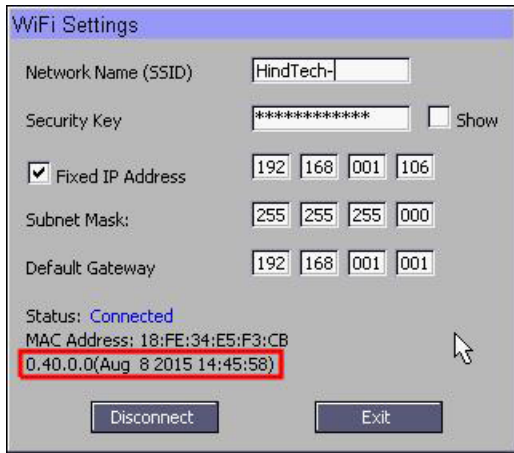


FIGURE 1—The red outline indicates the ESP software version.

The below list will have the versions of the ESP software that have been tested with MASSO, if you have a different version that is causing issues, please use this support forum: <https://masso.com.au/forums/topic/wifi-connectivity/>

1. Version 0.40.0.0(Aug 8 2015 14:45:58)
2. Version 1.2.0.0(Jul 1 2016 20:04:45)

NOTE: The MAC address is displayed on the MASSO WiFi settings above the software version number; this is important because WiFi networks need this MAC address to give access to the device on the network.

Step 2 – Running the “MASSO Link” Software on Your PC

The MASSO Link software can be used for download support.

The MASSO Link software is available for Windows, macOS, and Linux.

Download the ZIP file of the latest version of the MASSO Link software and extract all the files into a folder.

Next double click MASSO Link icon to start the software.

Now enter the IP address that is displayed in the MASSO WiFi Settings window and click the Connect button.

Step 3 – Transferring G-code Files to MASSO

Once connected, g-code files with .txt, .nc, .cnc, .tap, or .eia extensions can be dragged and dropped on to the MASSO Link software window (see Figure 2).

Please note that a USB flash drive needs to be connected to the MASSO controller to store these files.

A folder name can be given, and all the files sent from the MASSO Link will be saved on MASSO in this folder name. If you leave the folder name blank, the files will be saved on the root folder of the flash drive.

Click “Send File” to send the file to MASSO.

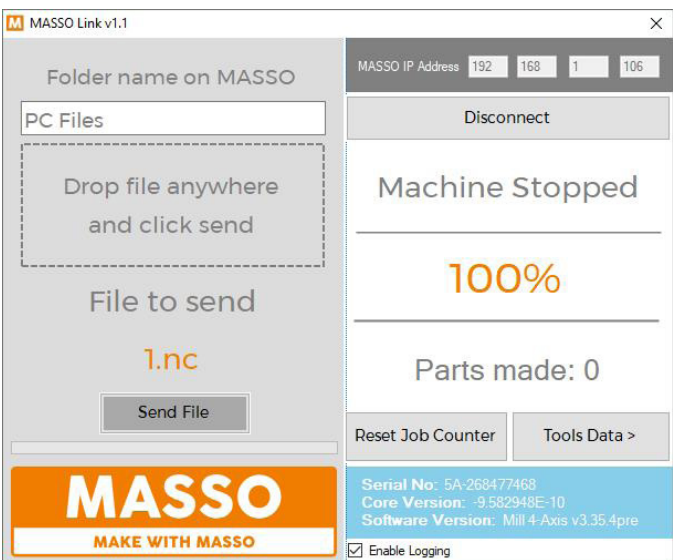


FIGURE 2

Thank you,
Sherline Products Inc.