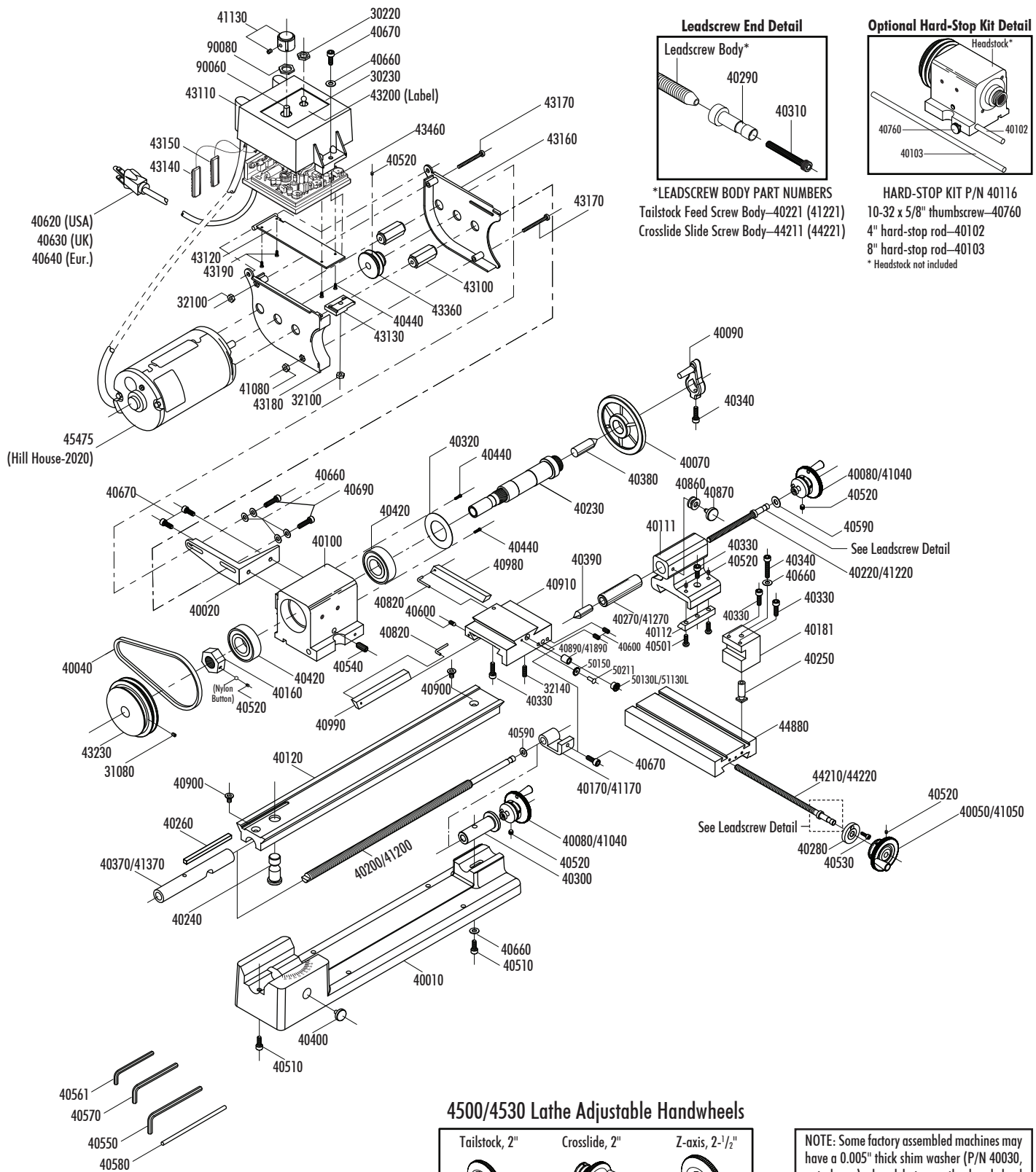


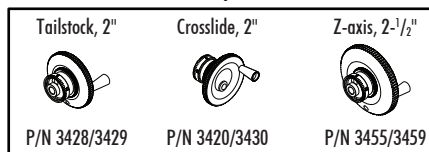
# Sherline Manual 4000 and 4500 Tabletop Lathe

NOTE: Where different, Inch part number is given first, followed by Metric part number.

## Exploded View and Part Numbers



## 4500/4530 Lathe Adjustable Handwheels



**NOTE:** Some factory assembled machines may have a 0.005" thick shim washer (P/N 40030, not shown) placed between the handwheel and thrust to adjust backlash. If removed when servicing the machine they should be replaced in the same position.